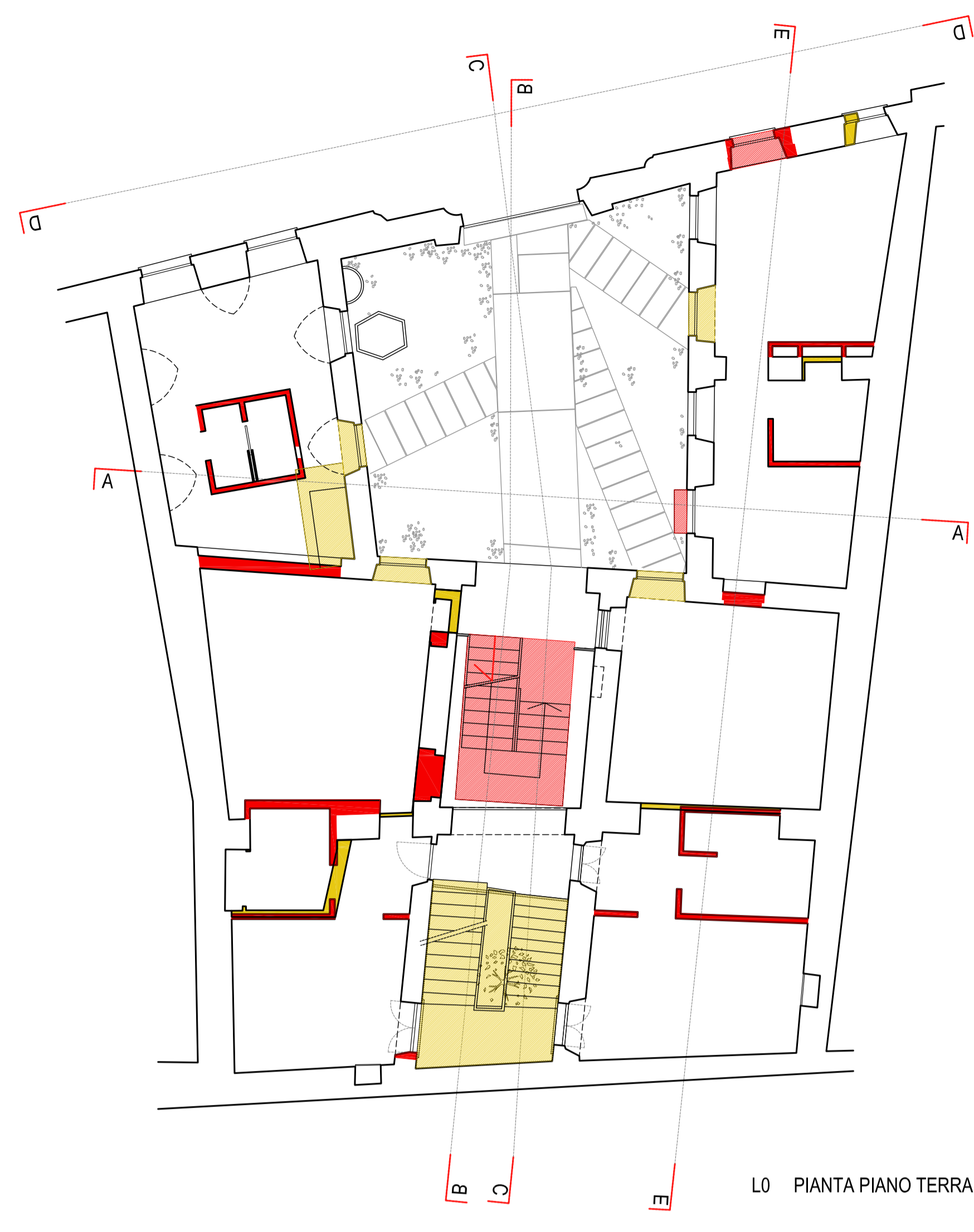
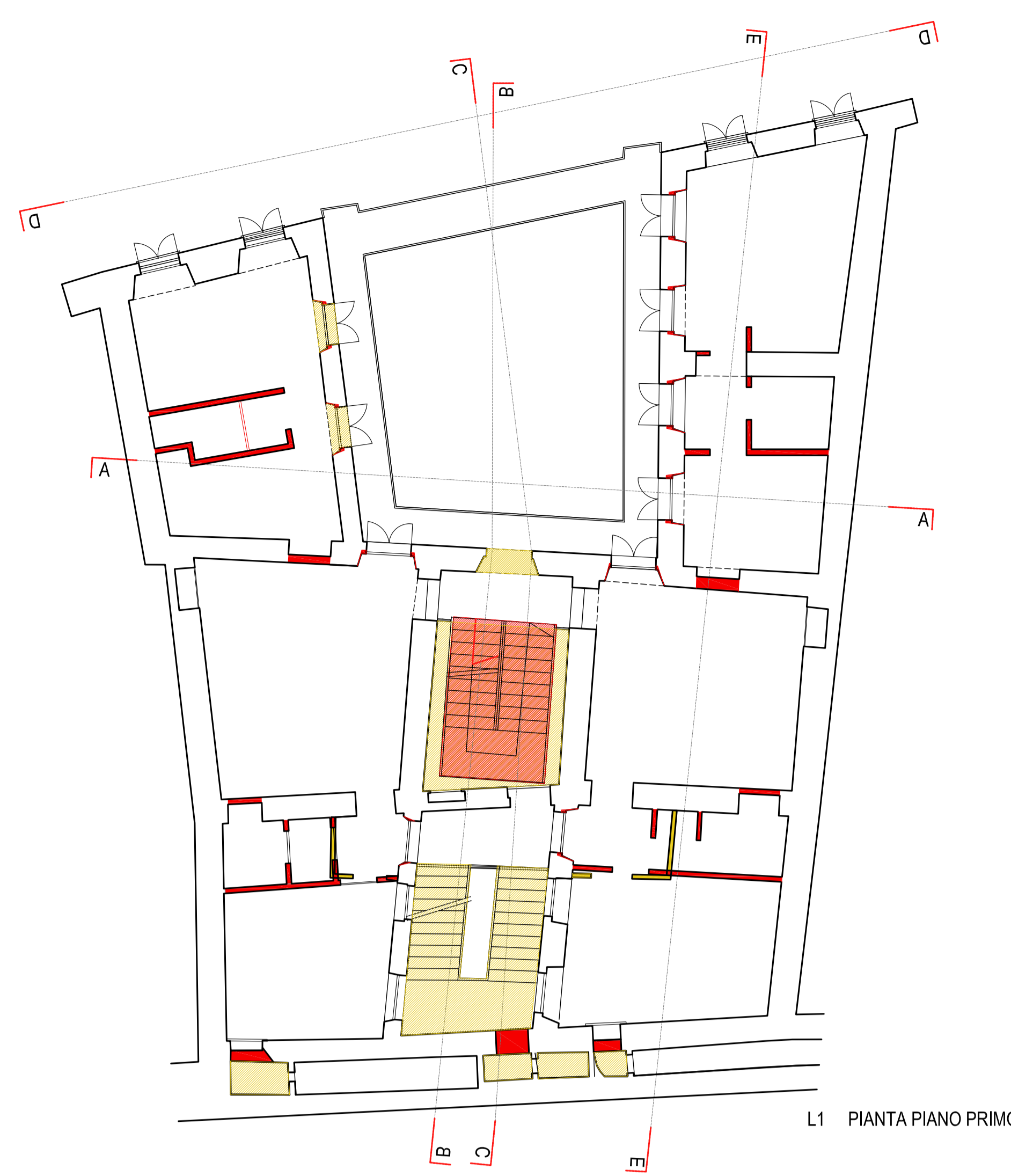


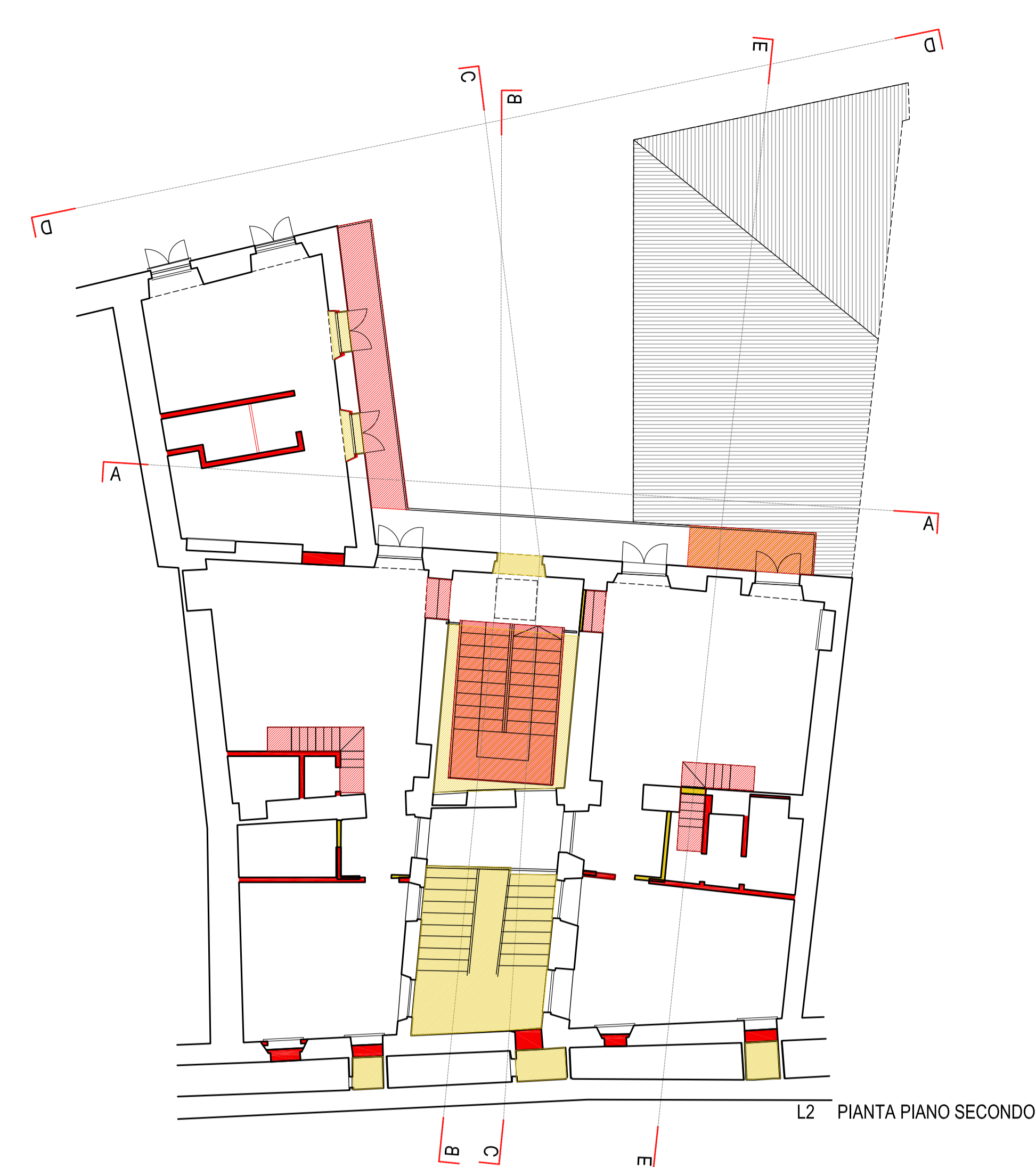
L-1 PIANTA PIANO INTERRATO



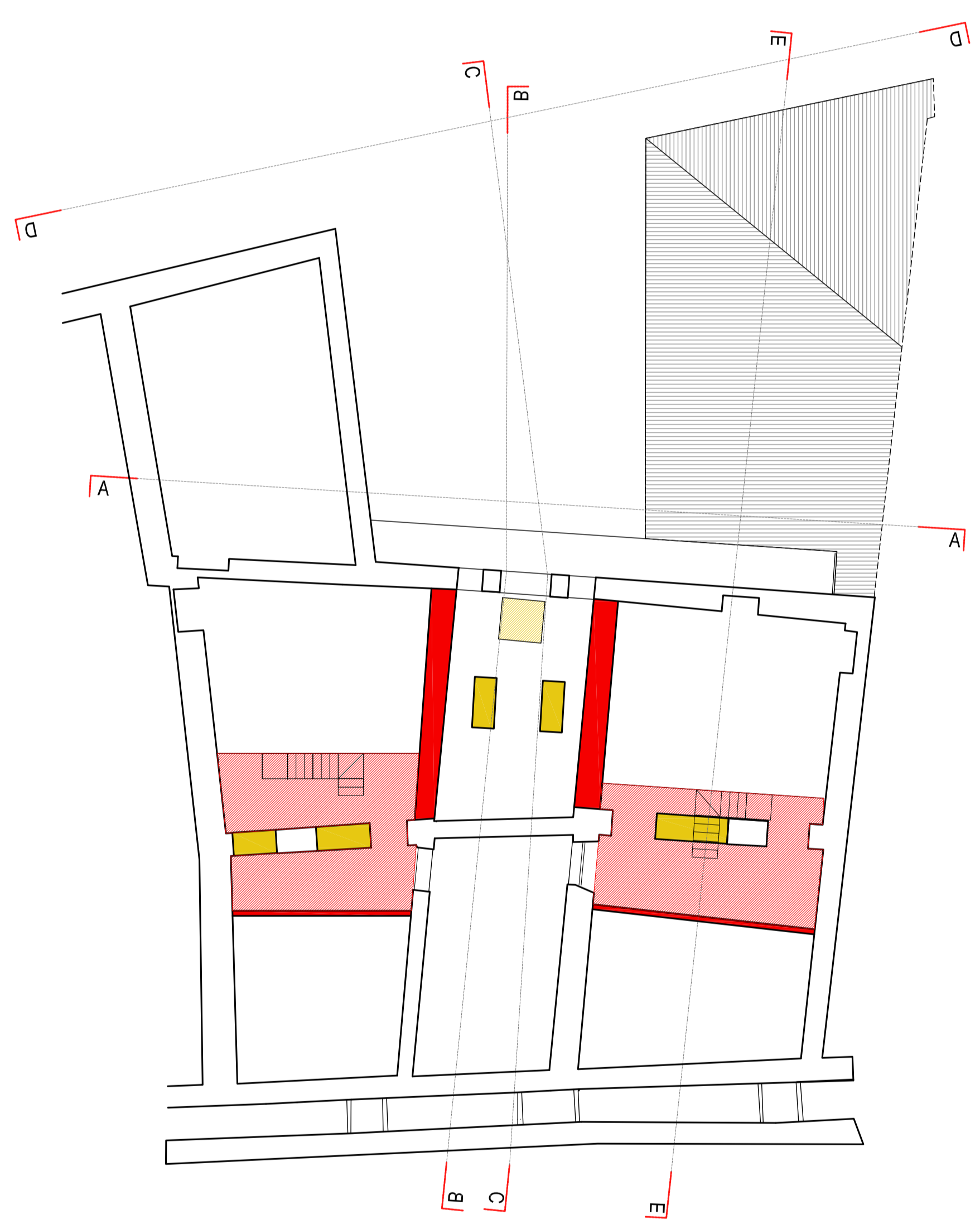
L0 PIANTA PIANO TERRA



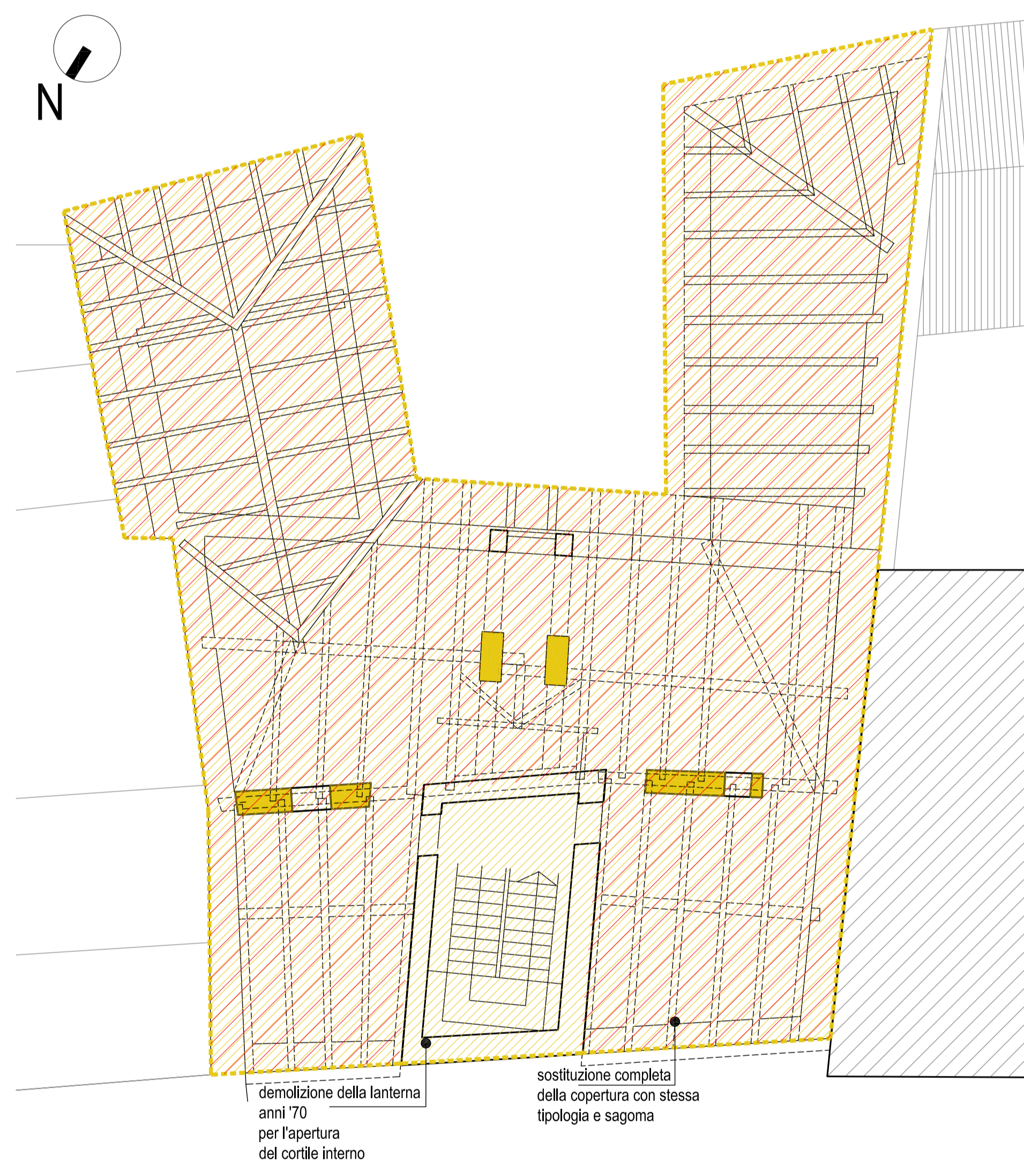
L1 PIANTA PIANO PRIMO



L2 PIANTA PIANO SECONDO



LS PIANTA PIANO SOPPALCHI



PIANTA STRUTTURA TETTO



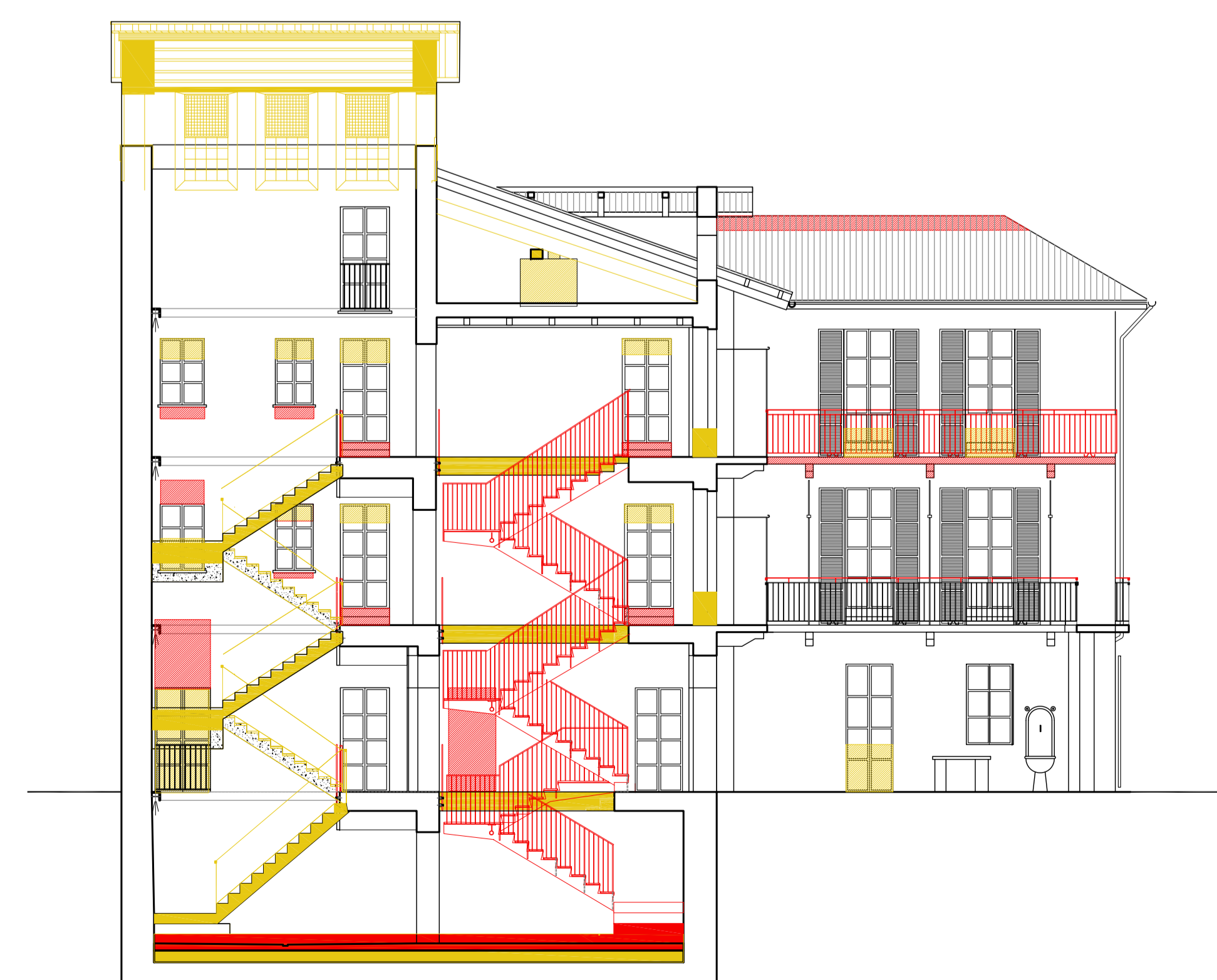
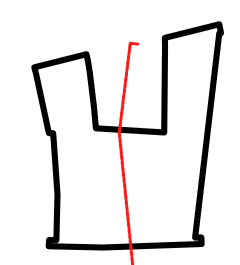
SEZIONE E-E



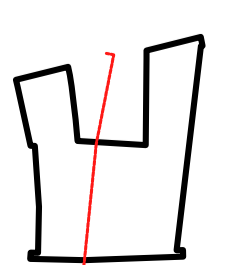
PROSPETTO SU VIA VESCOVALO
SEZIONE D-D



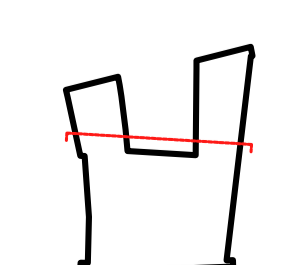
SEZIONE B-B



SEZIONE C-C



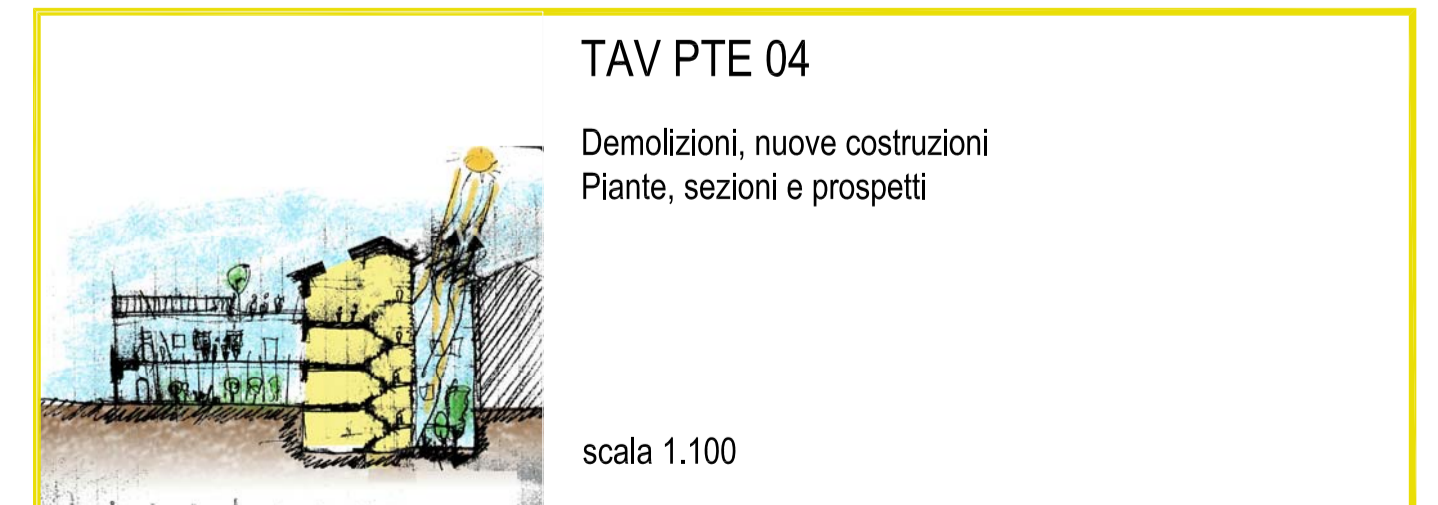
SEZIONE D-D



studioa - Via Bellefiori, 36 - 10125 Torino - Italy - t +39 011 6622246 - f +39 011 6695396 - mail@studioa.com



Interventi di Social Housing tramite casi pilota. Recupero dell'edificio in via Vescovalo, 20
PIANO TECNICO ESECUTIVO 06.02.2014



RESPONSABILE DEL PROCEDIMENTO:
ing. Franco Bocchetto
PROGETTISTI INCARICATI:
studioa
via Bellefiori 36
10125 Torino

PROGETTISTA:
Arch. Elisa Dompè, Studioa
via Bellefiori, 36
10125 Torino

IL PROGETTISTA MANDATARIO IL RESPONSABILE DEL PROCEDIMENTO IL SINDACO