

Committente:

CITTA' DI PINEROLO
PROVINCIA DI TORINO



Oggetto:

SISTEMAZIONE STRADA COMUNALE TALUCCO BRUN

PROGETTO ESECUTIVO
SETTORE C: PLANIMETRIA, PROFILO E SEZIONI DI PROGETTO

SCALA:
1:200

Identificazione elaborato	Ambito	Tipologia	Commessa	n° elaborato			
E1PE22311B04.2	E	1	P	E	223/11	B	04.2

Dati Progettisti

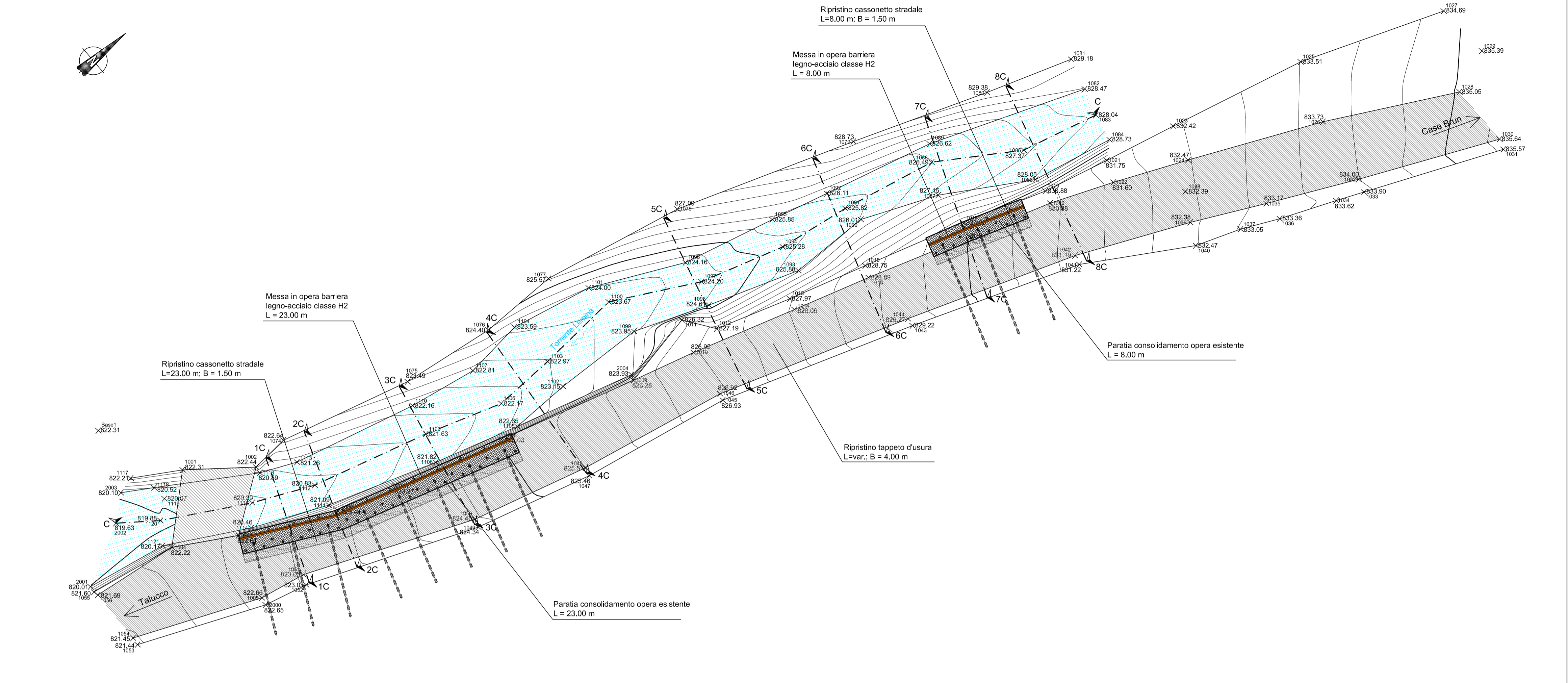
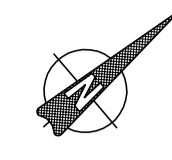
Ing. Massimo TUBERGA
GEO sintesi - Associazione tra Professionisti
C.so Unione Sovietica, 560 - 10135 Torino
Tel. 011 3913194 - Fax. 011 3470903
e-mail: info@geoengineering.torino.it

Rev.	Redatto	Controllato	Approvato	Data	Timbri e Firme
1	arch. C. Varvara	Ing. L. Marengo	Ing. M. Tuberga	07-12	

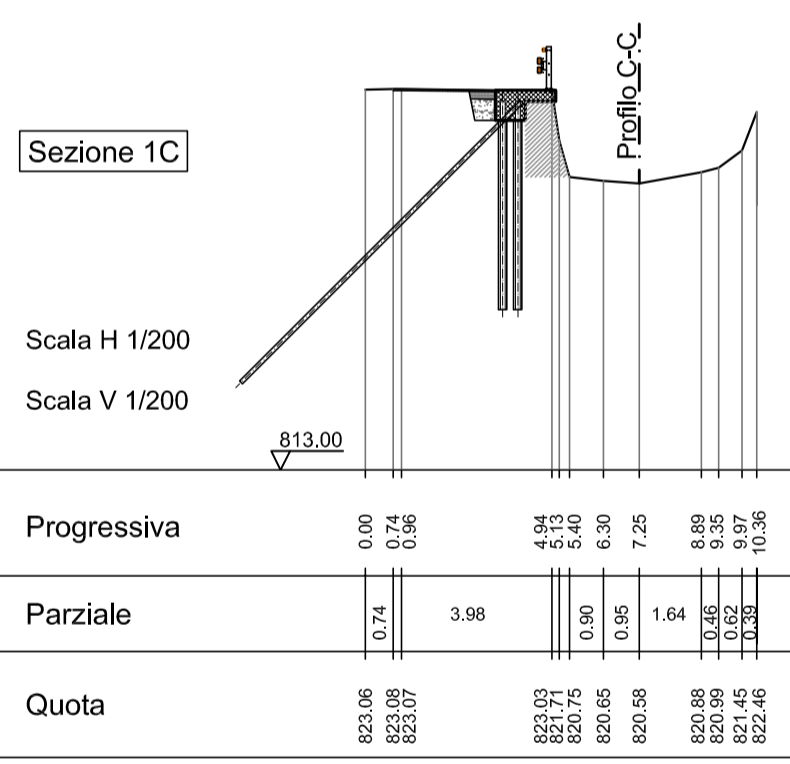
Il Responsabile del procedimento: _____ FIRMA

File : E1PE22311B04.2.dwg

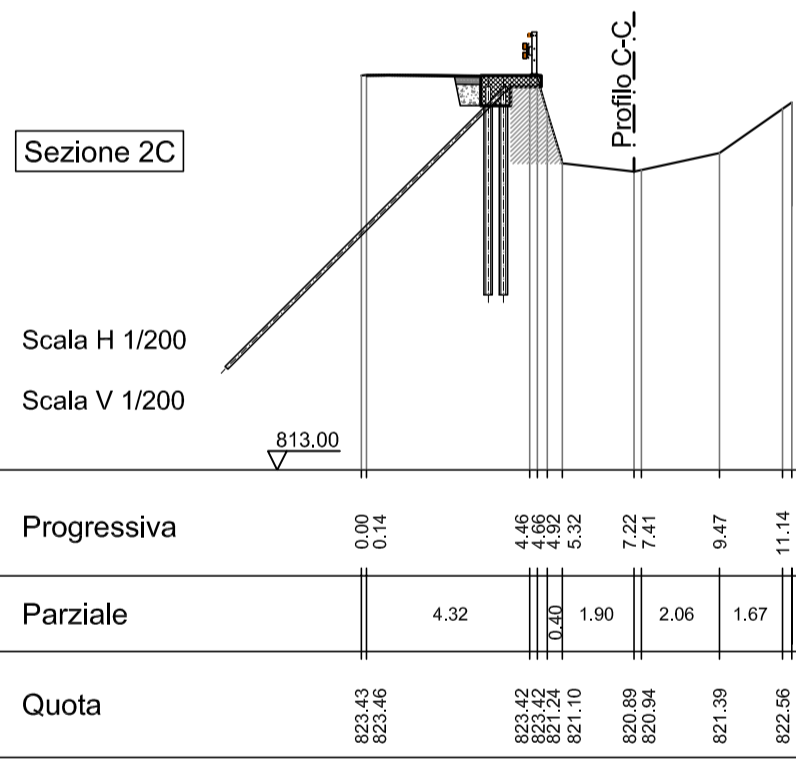
SETTORE C
Planimetria di progetto scala 1:200



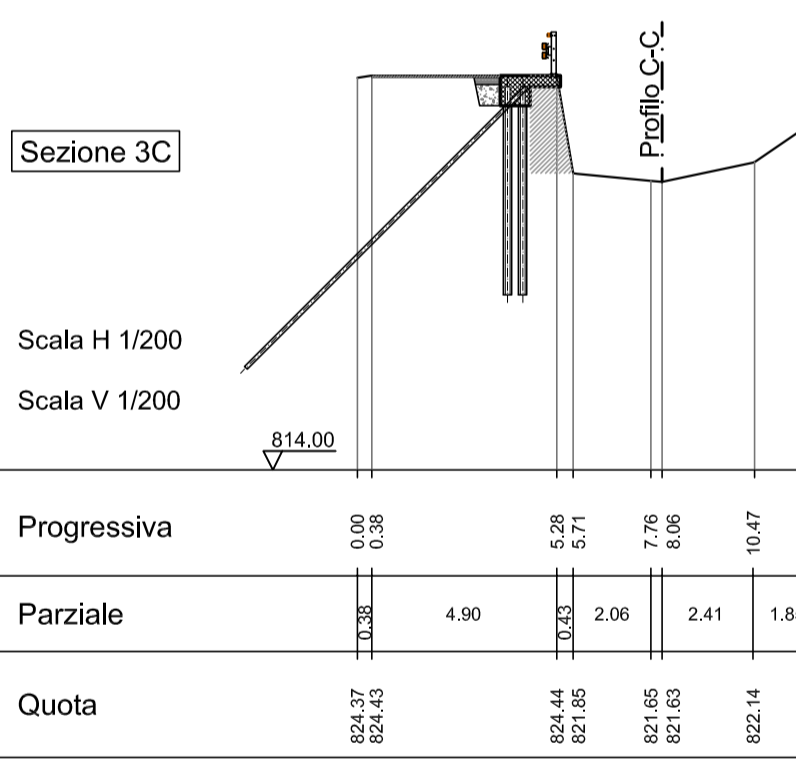
Sezione 1C



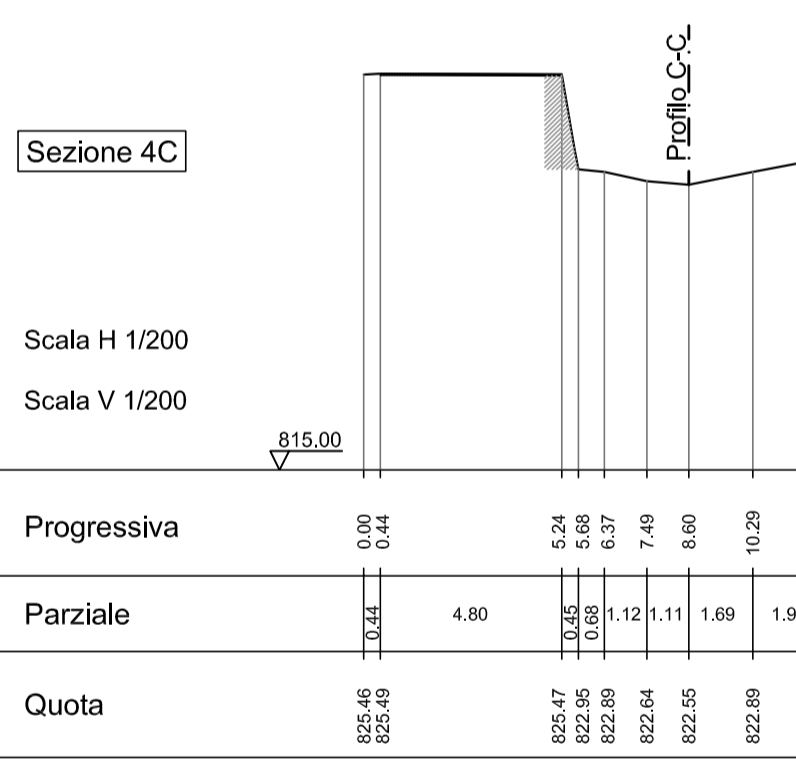
Sezione 2C



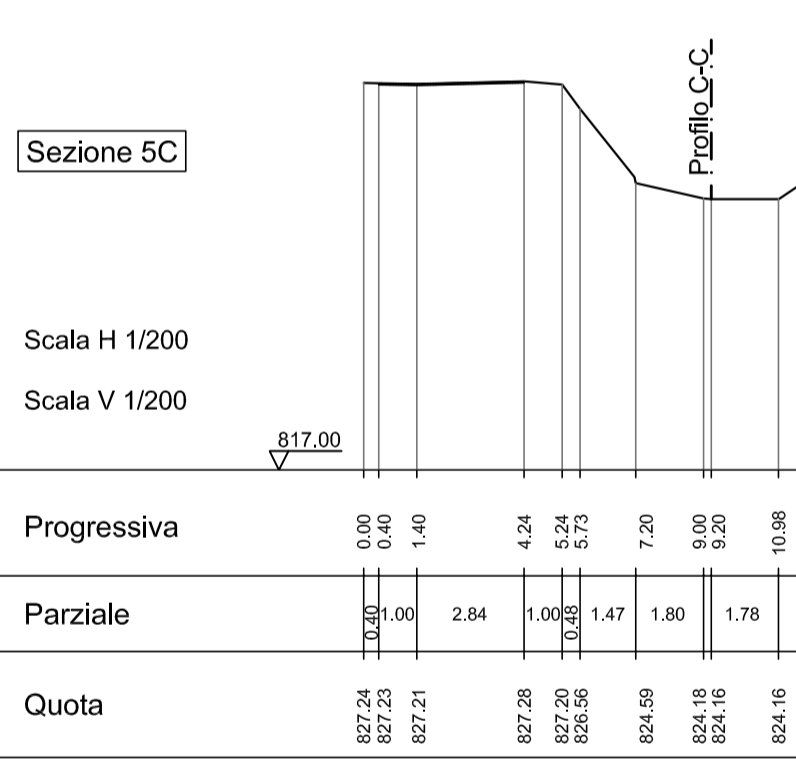
Sezione 3C



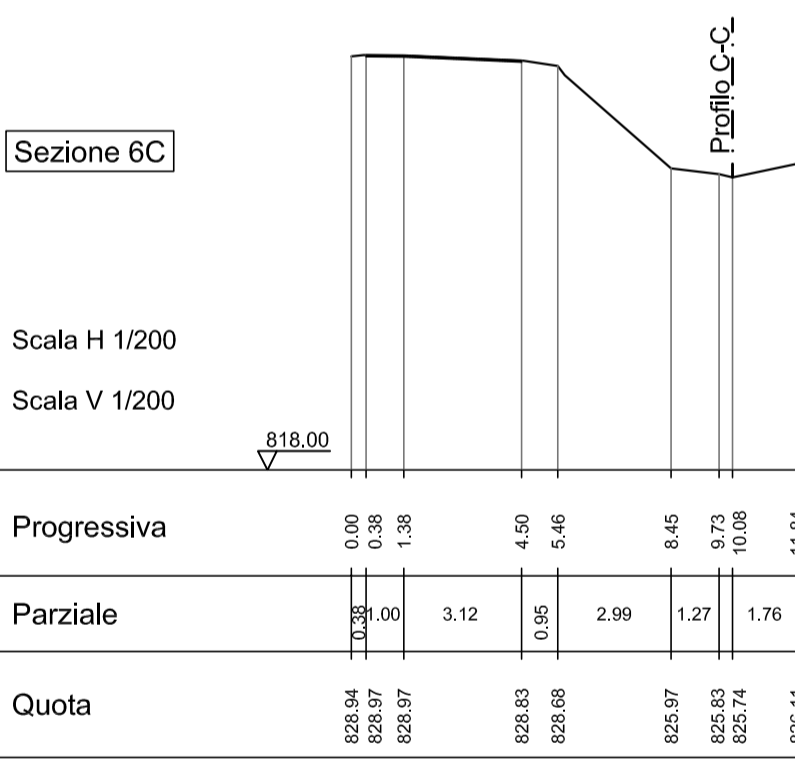
Sezione 4C



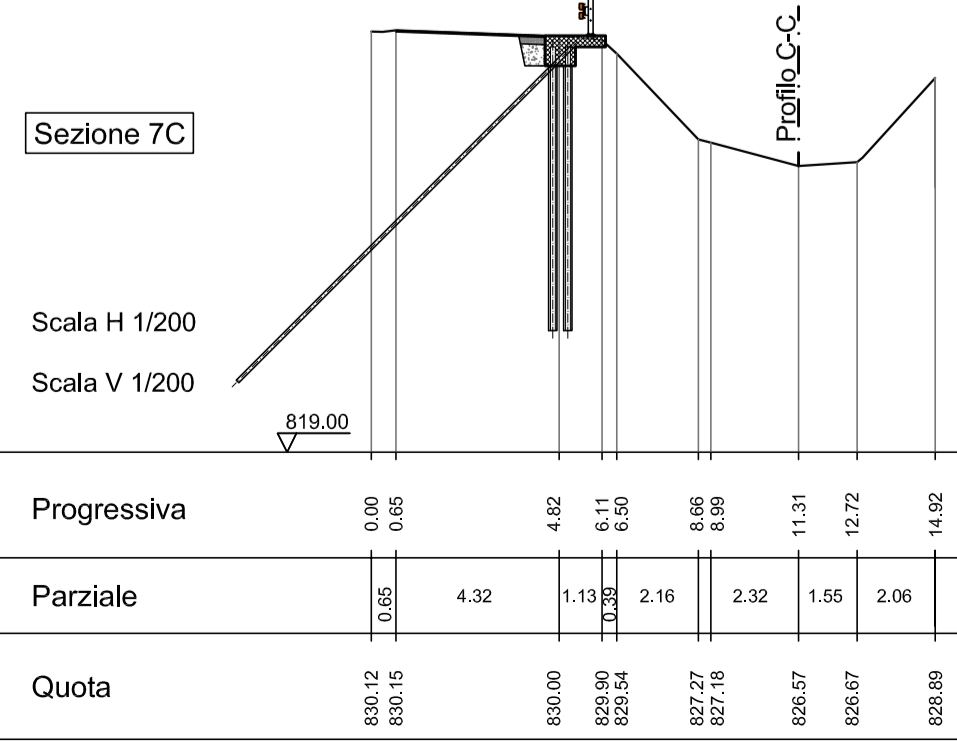
Sezione 5C



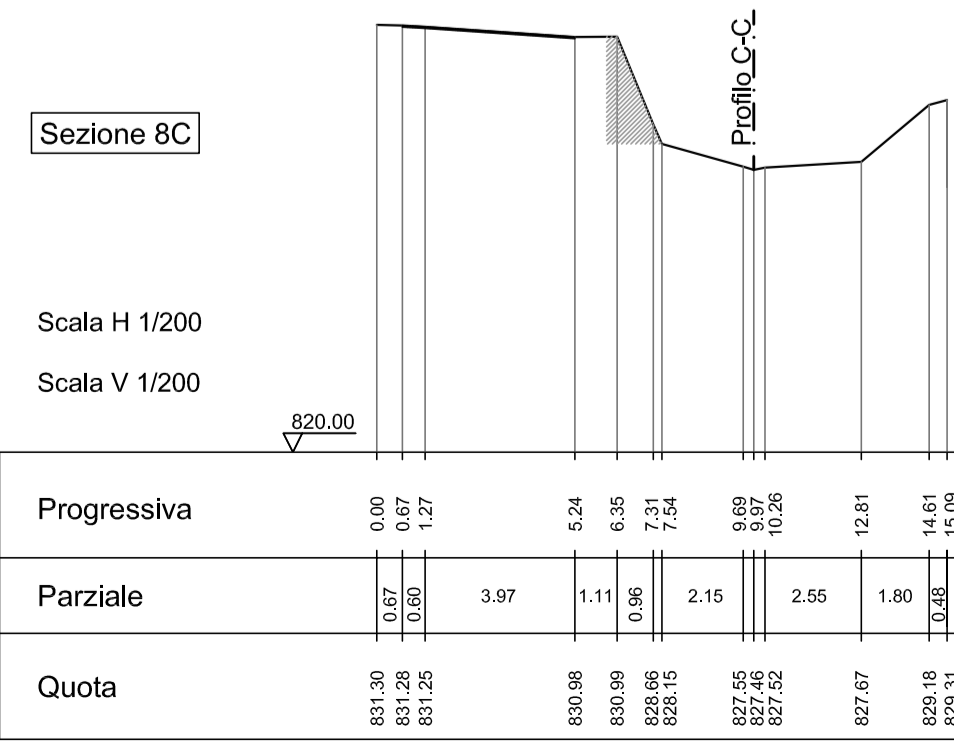
Sezione 6C



Sezione 7C



Sezione 8C



Profilo C-C

